

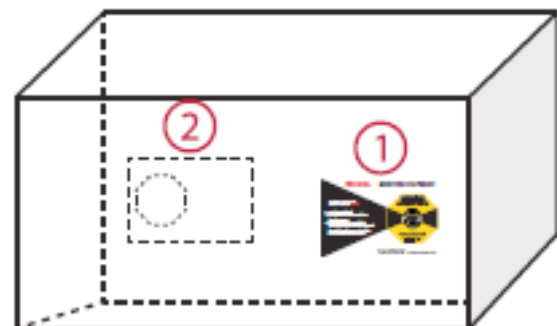
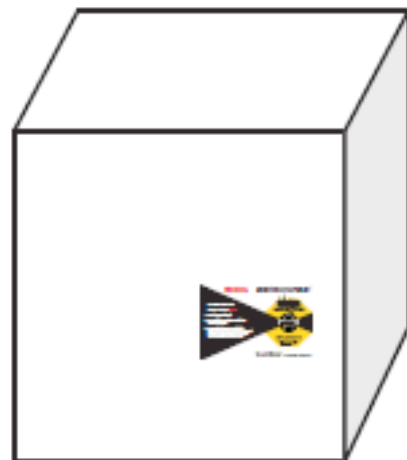
WE PROTECT YOUR PRODUCTS AGAINST CORROSION AND DAMAGE

# HOW TO USE THE SHOCKWATCH 2



## ShockWatch 2 impact indicator Mounting Instructions

1. Remove the backing from the ShockWatch 2 to activate the indicator.
2. Attach the ShockWatch 2 impact indicator in the lower third of the package/pallet as close to the edge as possible. Avoid the centre of the package because the mounting locations should be structurally sound.
3. Attach the companion label to the package/pallet to act as a visual deterrent.
4. If the package is twice as long as it is wide, use two ShockWatch 2 impact indicators. Place a second indicator in the same position on the opposite side of the package.
5. Place the alert sticker on your statement as a reminder to receivers to check the ShockWatch 2 indicator immediately upon arrival.
6. If dropped the bottom strip of the ShockWatch 2 will turn red.
7. Similarly, if the package is dropped whilst over turned the top strip will turn red.
8. The accompanying label provides recipients with clear instructions on what to do should mishandling occur.
9. While these instructions are considered best practices, each situation may be different.



For more information please email [info@bropack.cz](mailto:info@bropack.cz) or call +420 220 512 311.